

(membership includes
monthly subscription)

The Digital Viking



Twin Cities

PC USER GROUP

NEWSLETTER

Minneapolis & St. Paul, Minnesota USA • Vol. 43 No.2 • Sept. 2022

*TC/PC Exists to
Facilitate and Encourage
the Cooperative Exchange of
PC Knowledge and
Information Across
All Levels of Experience*

September 2022

[Membership Info 2](#)

[How to Limit Battery](#)

[Charge to a Certain](#)

[Percentage in](#)

[Windows 10/11 3](#)

[Interesting Internet](#)

[Finds 11](#)

[SIG Information 13](#)

[TC/PC Calendar 14](#)

[Membership Application 15](#)

[Maps to Events 16](#)

General Meeting
Tuesday, September 13, 2022
7:00 PM

The Frugal Genealogist

Presenter: Sue Mueller

Via Zoom Only

Have you always wanted to find out about your family tree and whether any of your ancestors were of royal blood, but felt daunted by the cost and financial commitment of a program like Family Tree Maker and sites like Ancestry.com? Well, this is the presentation for you.

In this presentation you will learn how to do genealogical research without breaking the bank! This presentation focuses on free resources that can be found on the internet by exploring county, city, and university libraries, free sites you may not know, using social media and connecting with relatives you've had trouble finding.

Sue Mueller, SIG leader and a member of Erie, Pennsylvania's users group, teaches a wide range of classes on genealogical research and has given APCUG workshops and VTCs. Get ready to learn a lot! 📖

Note: All TC/PC Meetings and SIG Groups will be virtual until further notice. Visit tcpc.com for info..

Tech Topics with Jack Ungerleider via Zoom at 6pm before the General Meeting.

TC/PC is a
Member of



24-Hour Information • www.tcpc.com

Application form inside back cover

The Digital Viking

The Digital Viking is the official monthly publication of the Twin Cities PC User Group, a 501(c)(3) organization and an all-volunteer organization dedicated to users of IBM-compatible computers. Subscriptions are included in membership. We welcome articles and reviews from members. The Digital Viking is a copyrighted publication and reproduction of any material is expressly prohibited without permission. Exception: other User Groups may use material if unaltered and credited.

Disclaimer: All opinions are those of the authors and do not necessarily represent the opinions of the TC/PC, its Board of Directors, Officers, or newsletter staff. TC/PC does not endorse, rate, or otherwise officially comment on products available; therefore, readers are cautioned to rely on the opinions presented herein exclusively at their own risk. The Digital Viking, its contributors, and staff assume no liability for damages arising out of the publication or non-publication of any advertisement, article, or other item. All refunds in full or in partial, for advertising, membership or any other item shall be at the sole discretion of the Twin Cities PC User Group Board of Directors.

Advertising

Full page (7½ x 9½)	\$100.00
Two-thirds page (7½ x 6)	80.00
Half page (7½ x 4¾)	65.00
One-third page (7½ x 3)	50.00
Quarter page (3½ x 4¾)	40.00
Member Bus. Card (2 x 3½)	10.00

Multiple insertion discounts available.

Contact Sharon Walbran at: SQWalbran@yahoo.com

Deadline for ad placement is the 1st of the month prior to publication. All rates are per issue and for digital or camera-ready ads. Typesetting and other services are extra and must be requested in advance of submission deadlines.

Payment must accompany order unless other arrangements are made in advance. Place make checks payable to: Twin Cities PC User Group

TC/PC 2022-2023 Board of Directors

Meets once or twice per year. All members welcome to attend.

Visit www.tpc.com for meeting details.

President —Lee Kaphingst	leekap@comcast.net
Vice President —Curtiss Trout	ctrout@troutreach.com
Secretary - Sharon Walbran	sharon.walbran@gmail.com
Treasurer - Sharon Trout	strout@troutreach.com
Newsletter Publisher Sharon Walbran	952-925-2726 sharon.walbran@gmail.com
Web Master Curt Trout	ctrout@troutreach.com
Board Members:	
Steve Kuhlmeier	skuhlmeier@hotmail.com
Lon Ortner	612-824-4946 lon@csacomp.com
Lee Kaphingst	leekap@comcast.net
Jeannine Sloan	Ambassador for Friendship Village
Curtiss Trout	ctrout@troutreach.com
Sharon Trout	strout@troutreach.com
Jack Ungerleider	jack@jacku.com
Sharon Walbran	sharon.walbran@gmail.com

TC/PC Member Benefits

Product previews
and demonstrations

Special Interest Groups
Monthly Newsletter

Discounts on products
and services

Contests and prizes

Business Member Benefits

All of the above PLUS:

FREE ½ page ad on
payment of each renewal

20% discount on all ads
Placed in the *Digital
Viking* Newsletter

Up to 5 newsletters mailed to
your site
(only a nominal cost for each
additional 5 mailed)

Newsletter Staff

Editor Sharon Walbran

How to Limit Battery Charge to a Certain Percentage in Windows 11/10

Extend the life of your laptop's battery



Written by: Sydney Butler

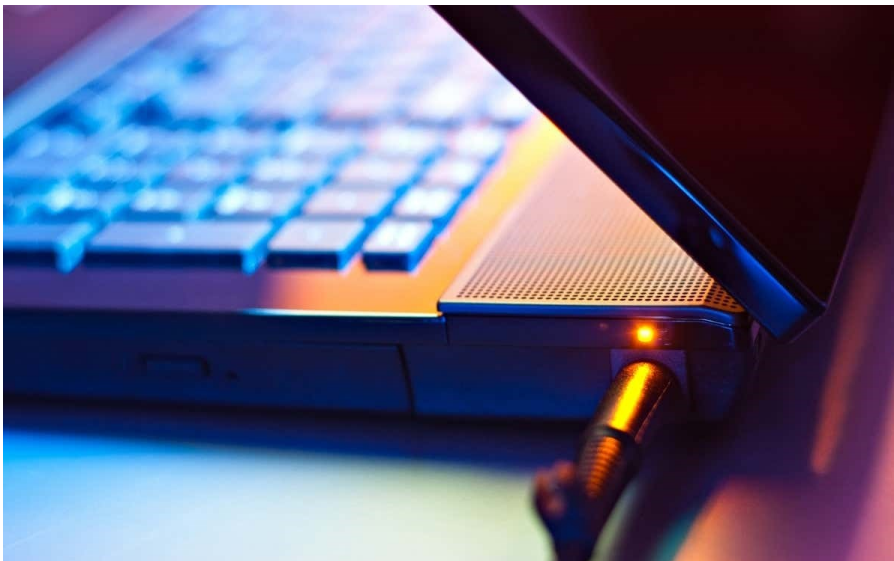
Posted on: June 17th, 2022 in: Windows 11, www.helpdeskgeek.com

The latest Apple macOS versions detect whether you're using the laptop on AC power for extended amounts of time. It automatically limits the maximum battery level to 80% to extend your battery life.

Neither Windows 10 nor 11 have this feature at the time of writing, but if you want a similar option to make your battery last longer on your Windows laptop, you have a few options.

Table of Contents

- Why Limit Your Laptop Battery Charging Level?
- Window's Limited Battery Settings
- Using a Third-party App
 - Battery Limiter (Free)
 - Battery Optimizer (Free)
- Limiting Battery Charge on Common Laptop Brands
 - Limiting Charge on Asus Laptops
 - Limiting Charge on Dell Laptops
 - Limiting Charge on HP Laptops
 - Limiting Charge on Lenovo Laptops
 - Limiting Charge on Microsoft Surface Laptops
 - Limiting Charge on MSI Laptops
- Why Not Remove the Battery?



Why Limit Your Laptop Battery Charging Level?

Why does limiting the maximum charge of your laptop battery make it last longer? This has to do with lithium-ion battery chemistry and how it works. You can get an in-depth explanation in our [Definitive Guide to Battery Charging](#).

The short version is that lithium batteries don't like to be kept at maximum charge capacity for prolonged periods. This stresses the battery and wears it out more quickly. You are hastening the point where you have to [replace](#) it. That's a massive problem if you have one of the many modern thin laptops where the battery is not removable and quite expensive to replace professionally.

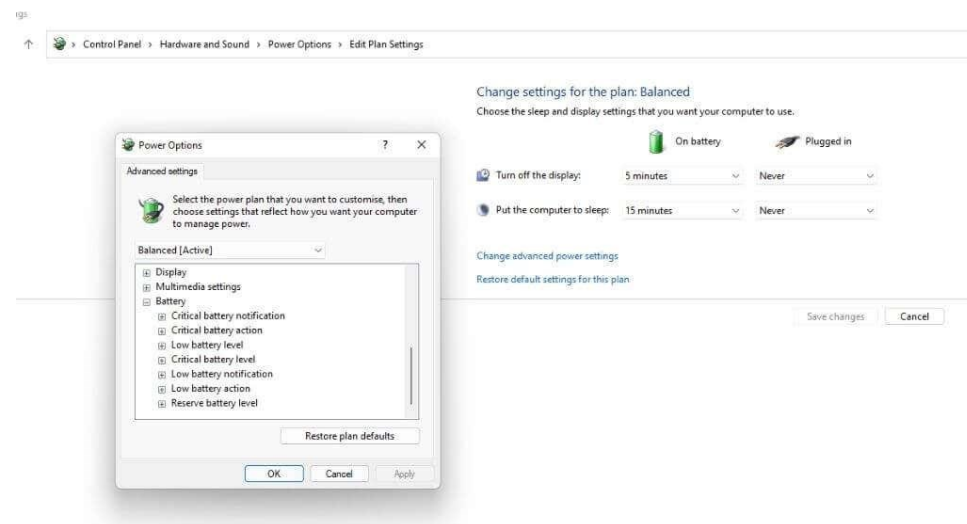


By limiting the maximum charge to 80%, you maximize your battery's useful lifespan. Thanks to how quickly modern lithium batteries can charge, filling that last 20% capacity before you unplug the AC adapter isn't a big deal.

Window's Limited Battery Settings

If you open up **Power Options** in Windows 10 or 11, open **advanced power settings**, and expand the **battery section**, you won't find much there.

All of the settings are related to what Windows should do when battery power gets low.



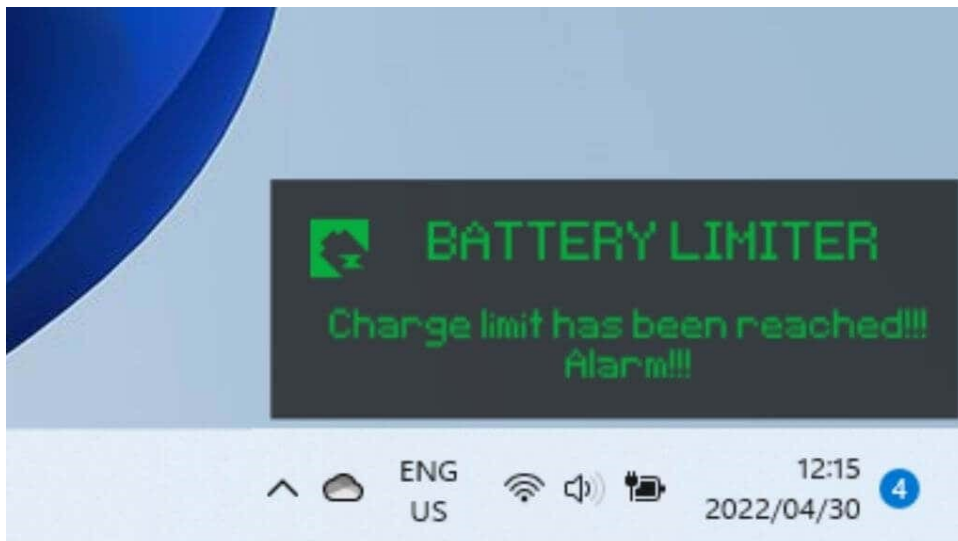
It is important to avoid letting your battery reach critical levels, as that also improves battery longevity, so at least you can set a comfortable critical shutdown level.

Using a Third-party App

Since Windows doesn't have this feature built-in, you can use a third-party app to achieve a similar outcome. Unfortunately, none of these apps can control when your laptop starts charging or at what percentage it will stop charging. Instead, they'll provide you with information about your battery and advise you to change your settings or manually unplug your laptop when the time is right.

Battery Limiter (Free)

Battery Limiter is a simple freeware app that simply sounds an audible alarm when your laptop has charged up to the preset threshold. This isn't much use if you want to limit your battery charge when using your laptop as a desktop computer. Still, it's an excellent way to ensure you don't overcharge your machi for users who are mainly always on battery power.



The threshold is set to 90% by default, but you can adjust it up to 96%, just short of a full charge. The app developer believes you'll hit the sweet spot between maximum charge versus battery wear within the range.

Battery Optimizer (Free)

Battery Optimizer uses proprietary analysis methods to check the existing health of your laptop battery and suggests things you can do to preserve that health.



Based on the user review we've read about the application, it does seem to help both extend battery life and battery lifespan, but the latter is hard to prove.

Apart from a proprietary, brand-specific charge limiter, Battery Optimizer is the next best way to keep your battery in good condition over the long term.

Limiting Battery Charge on Common Laptop Brands

While no third-party software we found can stop your battery from charging above a certain percentage, laptop manufacturers can build this feature into their hardware.

If your laptop supports a charging threshold, you can most likely find the manual setting in the UEFI menu (the replacement for the old BIOS technology). Since that's not convenient to access, many laptop manufacturers offer a first-party app to toggle those hardware-level settings without rebooting your system.



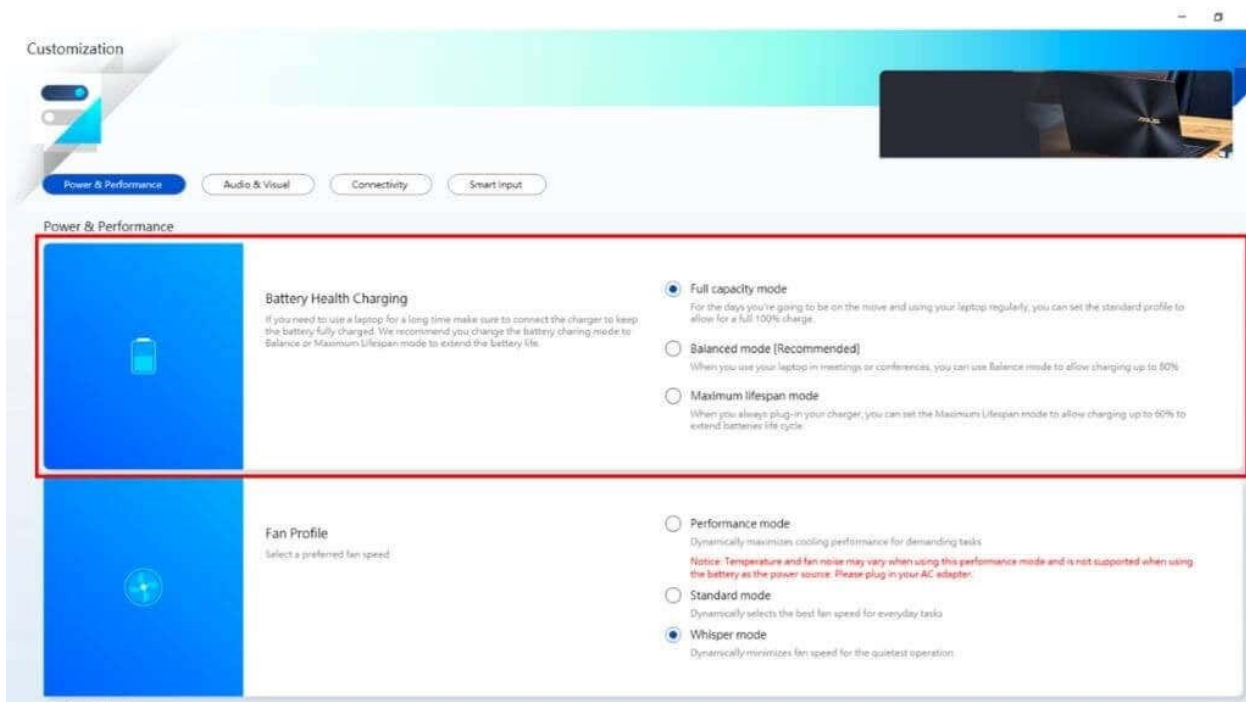
We're covering a few of the most popular laptop brands below, but even if you have one of these, your specific model might differ on whether it supports the feature or how to access it. Consult your laptop's manual and keep in mind that you may have to perform a

firmware update on older laptops to access battery threshold settings.

Limiting Charge on Asus Laptops

Asus has an official charging threshold feature it calls Asus Battery Health Charging. This is an application preinstalled on Asus laptops as part of [MyASUS](#), but it's easy to miss. You'll initially get a "Battery power setting is in Full Capacity Mode now" message, but you'll only get another notification 90 days later if you dismiss that message.

To access the different modes, you can right-click the battery icon and select Maximum Lifespan Mode, which stops charging at 60%. This is perfect for users who constantly work with their laptops plugged in. Just remember to switch it to Full Capacity Mode long enough before you need to travel so that there's time to charge up.

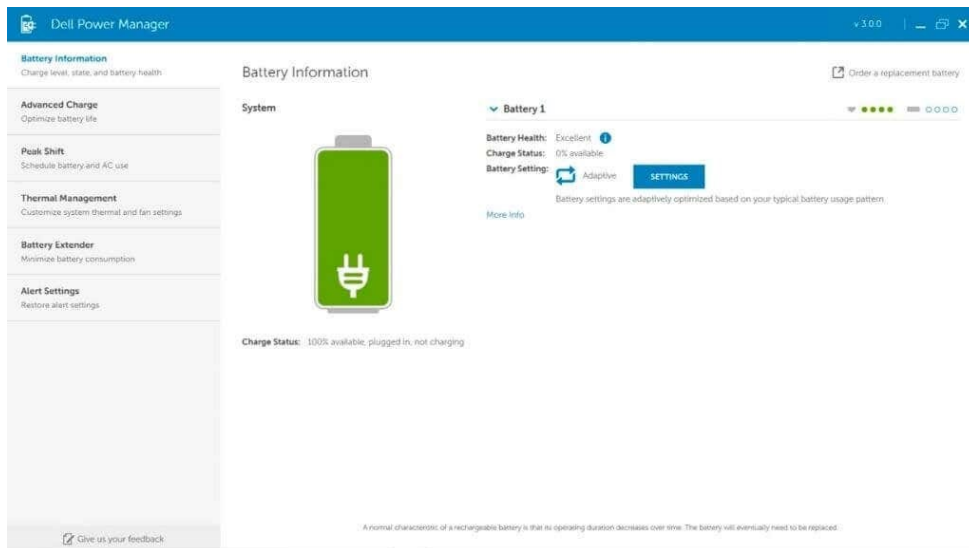


Balanced mode caps your charge at 80%, so if you have to leave without warning, you should have a usable amount of battery life left while still preventing the worst battery degradation.

If you like to spend time in Linux, ASUS laptops also support [battery thresholds](#) in that operating system.

Limiting Charge on Dell Laptops

Dell laptops come with the [Dell Power Manager Utility](#) pre-installed. All you have to do is launch the app, open the Battery Information tab, and select settings.



Select the Primarily AC Use option, which will automatically limit charging to extend battery lifespan.

Limiting Charge on HP Laptops

If you're using a notebook from HP, you can activate the Adaptive Battery Optimizer. Not every HP laptop has this feature, so you'll have to check whether it's included with your specific model.

To [activate the feature](#):

1. Start or reboot the computer.
2. Press **F10** to enter **HP Computer Setup**.
3. Choose **Configuration**.

Change **Adaptive Battery Optimizer** to **Enabled**.

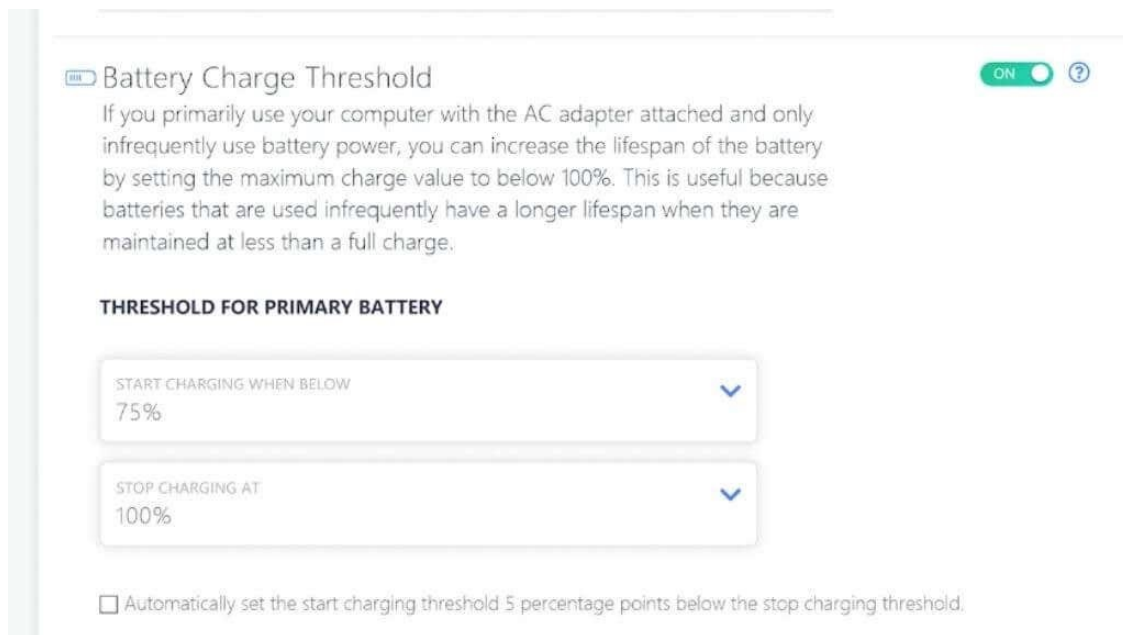
To check the status of the feature:

1. Start or reboot the computer.
2. Press **Escape** to open the startup menu.
3. Press **F2** to open the **HP PC Diagnostic UEFI**.
4. Choose **Power > Battery > Run Once**.

Once the test is done, select **Battery Details**.

Now simply check the **Adaptive Battery Optimizer** status in the results. It should be Enabled/Activated.

Limiting Charge on Lenovo Laptops



The best way to set a charge limit on a Lenovo laptop is to use Lenovo's own in-house [Lenovo Vantage](#) software. This is a general-purpose laptop utility for Lenovo laptop users with advanced power options, including a Conservation Mode that will limit the battery charge to between 55% and 60%.

Limiting Charge on Microsoft Surface Laptops

Ironically, Microsoft's own Surface laptop devices have a built-in battery charging limit feature in the UEFI menu. Once you've booted into the UEFI menu, choose **Boot Configuration > Advanced Options** and toggle **Enable Battery Limit Mode** on.

Limiting Charge on MSI Laptops

MSI users can use the Dragon Center or Creator Center apps (depending on the laptop type) to set a battery threshold. Select the toolbox icon in the lefthand section of the app. Under Battery Health Option, you'll see three options.



Best for Mobility just pushes the battery to full charge. Balanced mode charges the battery under 70% but stops charging at 80%. Best for Battery mode moves that target lower between 50% and 60%.

Why Not Remove the Battery?

If you have a laptop with a removable battery, you might be thinking that you can simply remove the battery and only put it in when you want to use your laptop on the go. This is an option, as most laptops will run from the charger just fine without a battery in.



However, this removes the inherent safety net against laptops' data loss. If the power fluctuates or there's a blackout, you may lose important information. It may also be unsafe to replace or remove the battery while the laptop is on, making it a hassle to remove and reinsert the battery.

On the other hand, if you have a laptop with a removable battery, you might not care about increasing its lifespan. After all, you can just order a new one and swap it for the worn unit in seconds.



Sydney Butler is a social scientist and technology fanatic who tries to understand how people and technology coexist. He has two decades of experience as a freelance computer technician and more than a decade as a technologies researcher and instructor. Sydney has been a professional technology writer for more than five years and covers topics such as VR, Gaming, Cyber security and Transhumanism. [Read Sydney's Full Bio](#)



[Go to Page 1](#)

Interesting Internet Finds November and December 2021

By Steve Costello

scostello AT sefcug.com

While going through the more than 300 RSS feeds, I often run across things that I think might interest other user group members.

The following are some items I found interesting during November 2021.

Do Random Words Make Better Passwords?

<https://askleo.com/do-random-words-make-better-passwords/>

In this post, Leo Notenboom explains why using three or more random words can be better for making passwords than the current method of long strings of random characters. Caveats to the random word method are also presented. Check it out and find out if random words work out better for you.

How To Charge Laptop With HDMI?

<https://www.techtricksworld.com/how-to-charge-laptop-with-hdmi/>

I did not even know it was possible to charge a laptop with HDMI until I read this post. So now, if I forget my laptop charger on vacation, I have other solutions than ordering a new one from Amazon again.

What's The Reason For Free Software?

https://askbobrankin.com/whats_the_reason_for_free_software.html

I used to get this question when moderating the BRCS Freeware SIG. (Some files from the SIG meetings are still available at <https://app.box.com/v/brcs-freewaresig> and are probably still useful.) Bob Rankin provides a detailed answer to the question in this post.

What Is A VPN Kill Switch And Why You Should Enable It?

<https://www.online-tech-tips.com/computer-tips/what-is-a-vpn-kill-switch-and-why-you-should-enable-it/>

OK, I know there has been a lot of talk recently about using a VPN with unsecured Wi-Fi. If you are using a VPN for security with unsecured Wi-Fi, you need to know if it has a kill switch enabled or even has one. This post explains why the kill switch is a must-have. (Note: I use two different VPNs, and they both have a kill switch enabled.)

Beware QR Code... Articles

<https://firewallsdontstopdragons.com/beware-qr-code-articles/>

The author of this blog explains that contrary to recent articles warning about malicious QR codes, QR codes are not malicious in and of themselves. Furthermore, he explains how to make sure QR code scams do not take you in. I think this is a must-read to clear up a lot of confusion.

Can I Use The Web Anonymously From My Android Phone?

<https://www.askdavetaylor.com/use-web-anonymously-privately-from-android-vpn-incognito-tor/>

Dave Taylor answers this question with a few possible solutions.

What Is DNS-Over-HTTPS and How Does It Work?

<https://www.makeuseof.com/what-is-dns-over-https/>

This post explains what DNS-Over-HTTPS is, how it works, the advantages and the disadvantages.

How To Disable The Smart Compose Feature In Gmail

<https://techviral.net/disable-smart-compose-gmail/>

I keep the Smart Compose feature turned off because I distrust the AI figuring out what I want to say. So if you have not turned this feature off in your Gmail, I suggest you do it now.

Is Charging Your Phone Overnight A Bad Idea?

<https://www.online-tech-tips.com/smartphones/is-charging-your-phone-overnight-a-bad-idea/>

This question pops up from time to time. The people at Online Tech Tips answer this and some other questions regarding battery charging.

HTTPS vs. VPN: 5 Reasons You Do Need Both

<https://www.makeuseof.com/https-vs-vpn-reasons-you-do-need-both/>

If you don't have a VPN, always use HTTPS. However, if you have a VPN, this post explores why using both is a good idea. (Note: I always use both when I am away from my home network. Sometimes, I even use both, especially with banking and shopping sites.)

Five Simple Rules For Spotting A Scam

<https://cynmackley.com/2021/11/22/five-simple-rules-for-spotting-a-scam/>

I am sure you keep hearing about scams; I know I do all the time. This post has some simple and easily remembered tips for spotting scams. Check this post out.

How Using BCC Reduces Spam

<https://askleo.com/bcc-reduces-spam/>

Everyone should know this already, but I still get things from others who don't know or don't care. (Note: As a former user group officer and newsletter editor, I learned to use BCC early on, and I think everyone should too. If I see multiple recipients in an email, I flag future emails from that sender to go to a specific folder and email the sender back requesting that they use BCC in the future.)

This work by [Steve Costello](#) is licensed under a [Creative Commons Attribution 4.0 International License](#).

As long as you attribute this article, you can use it in part, or whole, for your newsletter, website, or blog.



[**Go to Page 1**](#)

Special Interest Groups (SIGs)

w Work phone h Home phone c Cell phone
* Meets at an alternate location

Most SIGs will meet at Edina Executive Plaza, Conference Room #102, 5200 Willson Road, Edina, MN

Confirm with a SIG group if they meet elsewhere.
For more info contact the SIG Leader(s) listed here.

Get SIG announcements!
Link from www.tpc.com

Board of Directors*

All members are welcome! Check www.tpc.com for location.

Selected Saturday mornings

Linux on Saturday

This is for the Linux newbie and those trying to come over from Microsoft to a different operating system.

Second Saturday @ 9 AM-Noon

Note: No Meetings June-August

Jack Ungerleider 612/418-3494 c
jack@jacku.com

Tech Topics

Technical presentation/discussion on various technical topics from the following areas:

- Web/Internet
- Mobile Devices and Apps
- Playing with Programming
- DIY (3D Printing, R-Pi, other hobby electronics, etc.)

Second Tuesday @ 6:00-7:00 PM

Every month

Right before the general meeting.

Jack Ungerleider 612/418-3494 c
jack@jacku.com

Microsoft Access

All levels. Presentations by expert developers within the group and by MS reps.

Third Saturday 9:00 AM—Noon

Note: No Meetings June-August

Steve Kuhlmeier 952/934-8492
skuhlmeier@hotmail.com

Microsoft Office

Addresses the use, integration, and nuances of the Microsoft Office applications.

Combined with Systems on Saturday

Third Saturday of the Month

9:00 AM—Noon

Note: No Meetings June-August

Steve Kuhlmeier 952/934-8492
skuhlmeier@hotmail.com

Directions to Accord, 1515 Energy Park Drive for General Meetings:
From I-94 in St. Paul, take the Snelling Avenue exit, then go north on Snelling Avenue about one mile to Energy Park Drive. Take Energy Park Drive and take the first left into the driveway to 1515 Energy Park Drive.
From I-694 or Hwy 36 in St. Paul, take the Snelling Avenue exit, then go south on Snelling Avenue past Como Avenue to Energy Park Drive. Take Energy Park Drive and take the first left into the driveway to 1515 Energy Park Drive.

Directions to Edina Executive Plaza for Systems on Saturday, Access, Word and Picture Perfect SIGs: Take Highway 100 to the 50th Street/Vernon exit. [If you have come from the north, cross back over Highway 100 to the east side.] Take the first right and go past Perkins [The golf course will be on your left.] and continue on the east frontage road (Willson Road) to the next building—5200 . There is ample parking in the building's lot. Conference Room #102 is on 1st floor.

Help yourself by helping others!

Join the team & share your knowledge with others.

Contact TC/PC at www.tpc.com

Meetings start at 7:00 PM (9:00 AM on Saturday) unless otherwise noted. *Virtual Meetings during Covid pandemic.

September

October

SUN	MON	TUES	WED	THU	FRI	SAT
				1	2	3
4	5	6	7	8	9	10 Linux on Saturday SIG 9am—Noon
11	12	13 7pm General Mtg The Frugal Genealogist 6pm Tech Topics	14	15	16	17 MS Office SIG (includes Access) 9am—Noon
18	19	20	21	22	23	24
25	26	27	28	29	30	1
2	3	4	5	6	7	8 Linux on Saturday SIG 9am—Noon
9	10	11 7pm General Mtg TBA 6pm Tech Topics	12	13	14	15 MS Office SIG (includes Access) 9am—Noon
16	17	18	19	20	21	22
23	24	25	26	27	28	29
30	31					



You have just read an issue of The Digital Viking.

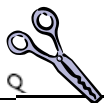
Would you like to receive this delivered directly to your email or business each month?

As a member of TC/PC, the Twin Cities Personal Computer Group, one of the benefits is reading this monthly publication at www.tcpc.com.

As a member of TC/PC, you may attend any or all of the monthly Special Interest Group (SIG) meetings and be eligible for software drawings. The small membership fee also includes access to real-live people with answers via our helplines, discounts, and various other perks.

Does membership in this group sound like a good way to increase your computer knowledge?

It's easy to do! Simply fill in the form below and mail it to the address shown.
(If you use the form in this issue, you will receive an extra month for joining now.)



Here's the info for my TC/PC Membership:	9/22
Full name _____	I'm signing up for:
Company name _____	<input type="radio"/> Individual/Family Membership (\$18)
Address _____	<input type="radio"/> Business Membership (\$100)
City _____ State _____ Zip _____	If an existing member your # _____
<input type="radio"/> Home <input type="radio"/> Business <input type="radio"/> Change address: <input type="radio"/> Perm. <input type="radio"/> Temp. 'til _____	Make checks payable to:
Home phone _____ Work phone _____	Twin Cities PC User Group 341 County Rd C2 W Roseville, MN 55113
Online address(es) _____	<u>http://www.tcpc.com</u>
Where did you hear about TC/PC? _____	<input type="radio"/> Check # _____ <input type="radio"/> Bill me <input type="radio"/> New member <input type="radio"/> Renewal <input type="radio"/> Prior member
<input type="radio"/> I DO NOT want any of my information disclosed.	I'm interested in:
<input type="radio"/> I DO NOT want to receive any mailings	<input type="radio"/> Training classes <input type="radio"/> Volunteering <input type="radio"/> Special Interest Groups: New User, Access, etc.
Administrative Use Only Rec'd _____ Chk# _____	List here:

September 13, 2022
7:00 pm
General Meeting

The Frugal Genealogist

Presenter: Sue Mueller

Via Zoom Only



341 County Rd C2 W
Roseville, MN 55113

FIRST CLASS MAIL